

HIGHLIGHTS

- Store and archive for long-term retention
- enforce information governance
- instantly search from office or phone
- automate resource-intensive processes
- combine paper, fax, forms email

Laserfiche® Avante™

Document and Business Process Management for the accelerated flow of information.

DESCRIPTION

For any organization, extending information access can be a challenge. Yet it's the key to increasing profitability, maximizing productivity and reducing operating costs. Avante combines sophisticated yet intuitive document management with powerful workflow automation to accelerate the flow of information throughout your organization—all while simplifying purchasing, administration and support.

Laserfiche Avante™ brings together our industry-leading document management system and powerful, fully integrated Workflow functionality. Whether you have a staff of one or one hundred, you'll simplify complex tasks, promote better decision making and keep your organization moving forward.

FUNCTIONAL AND FLEXIBLE

Every organization has its own unique needs. Some are looking for a secure content repository, some need to access information through primary business applications such as GIS or CRM, and some want to enable repeatable processes such as case management, contract management AP processing and more.

Avante is a flexible system that can be quickly and easily configured to meet any organization's needs. In addition to industry-leading content management to help you store, retrieve and secure your information, Avante includes sophisticated workflow tools to automate content-centric business processes while enabling increased visibility into performance.

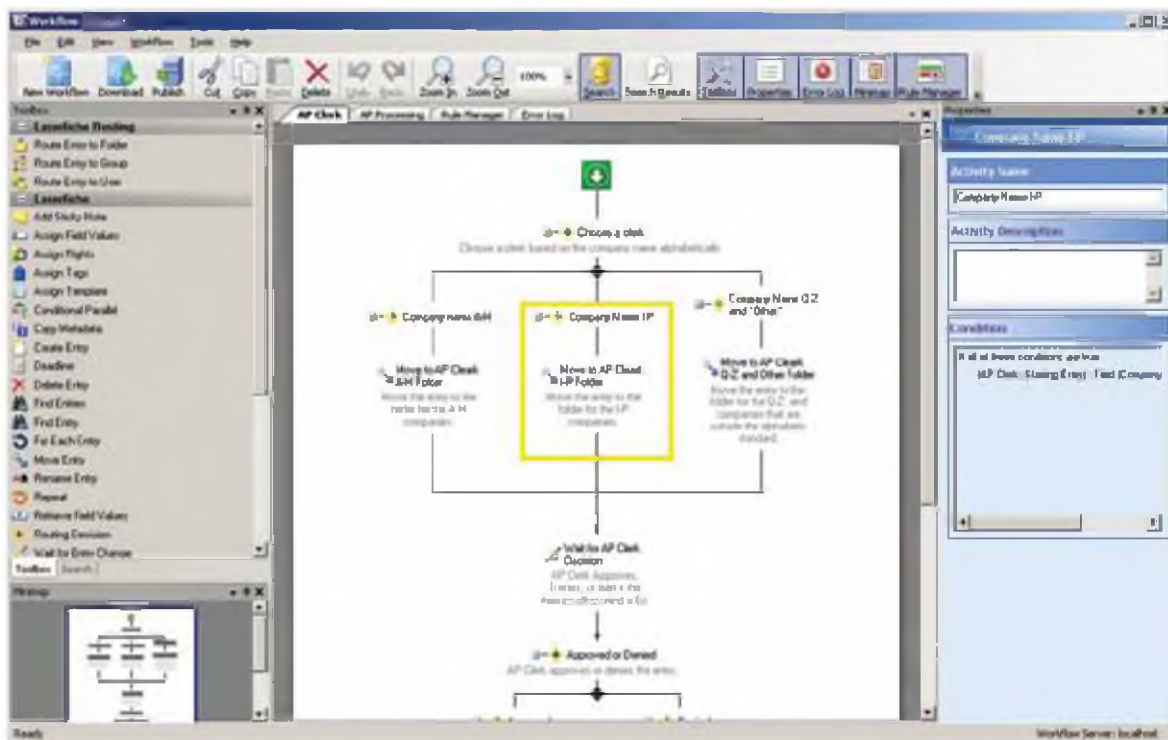
Avante empowers your organization to operate more efficiently, effectively and profitably by;

- managing all content - both structured and unstructured - throughout its life cycle
- ensuring that information is an asset that is consistent, reliable, useful and available
- facilitating compliance with failsafe security and auditing features
- integrating seamlessly with the applications employees use every day
- streamlining operations by automating manual, repetitive processes



EASY TO DESIGN, CONFIGURE AND EXTEND

More than just simple workflow automation, Laserfiche Workflow™ builds on the capabilities of Microsoft .NET to seamlessly integrate with your existing systems, business rules and data.



- Built-in activities help you build workflows quickly, while extensible rules and a built-in script editor.
- A graphical workflow designer enables you to create workflows by flowcharting your business processes with an intuitive interface for testing, modifying and supporting workflow activities.
- Builds on the capabilities of Microsoft Windows Workflow Foundation (WF) so you can extend its functionality to all your line-of-business applications.

MOVE TO ENTERPRISE CONTENT MANAGEMENT

When your system grows large enough, you can easily upgrade to Laserfiche Rio™ enterprise content management—which includes unlimited Laserfiche servers and repositories, Web-based document management and audit trail tracking—so you'll never outgrow your Laserfiche solution.